

PROTECT YOUR CUSTOMERS AND YOUR ACTIVITY

STILO AUTOMATIC TURNSTILE

The Covid 19 epidemic forces us to redesign spaces and the times for the use of common spaces that are a supermarket, an office or a canteen.



STILO AUTOMATIC TURNSTILE



the automatic turnstile **STILO**, with the objective to provide a useful, inexpensive and versatile product that it is also a small contribution the restart of the economy.

The **STILO** automatic turnstile , with a simple and elegant design, can be easily and quickly installed and ensures pedestrian transit control in supermarkets, in gyms, offices and wherever regulation of the pedestrian transit is needed.

The **STILO** automatic turnstile is designed to work with two instruments which are now indispensable in public businesses:

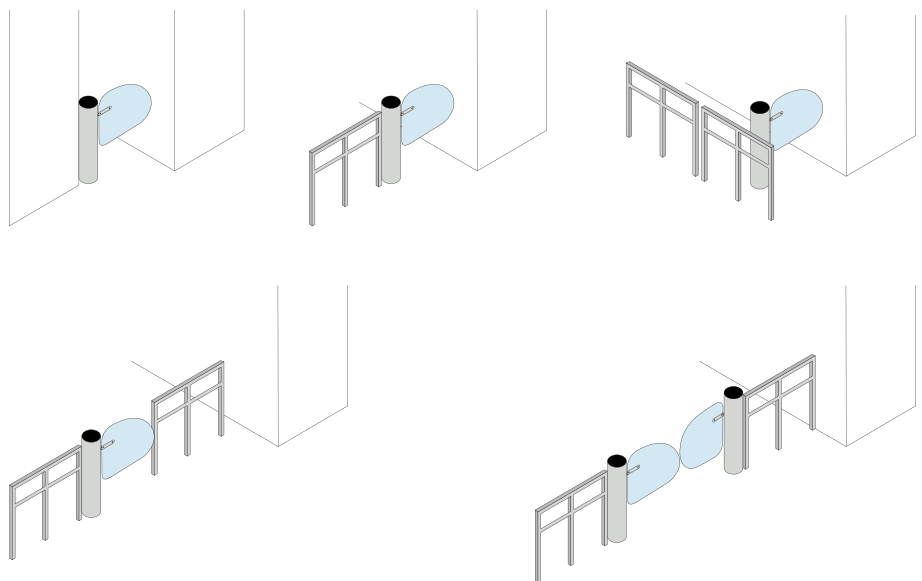
BS-DET2000BT, a tablet that allows recognition of the use of the mask and the detection of body temperature;

QK-COUNTER, a system that allows you to regulate the number of entrances and manage the maximum capacity.

STILO AUTOMATIC TURNSTILE

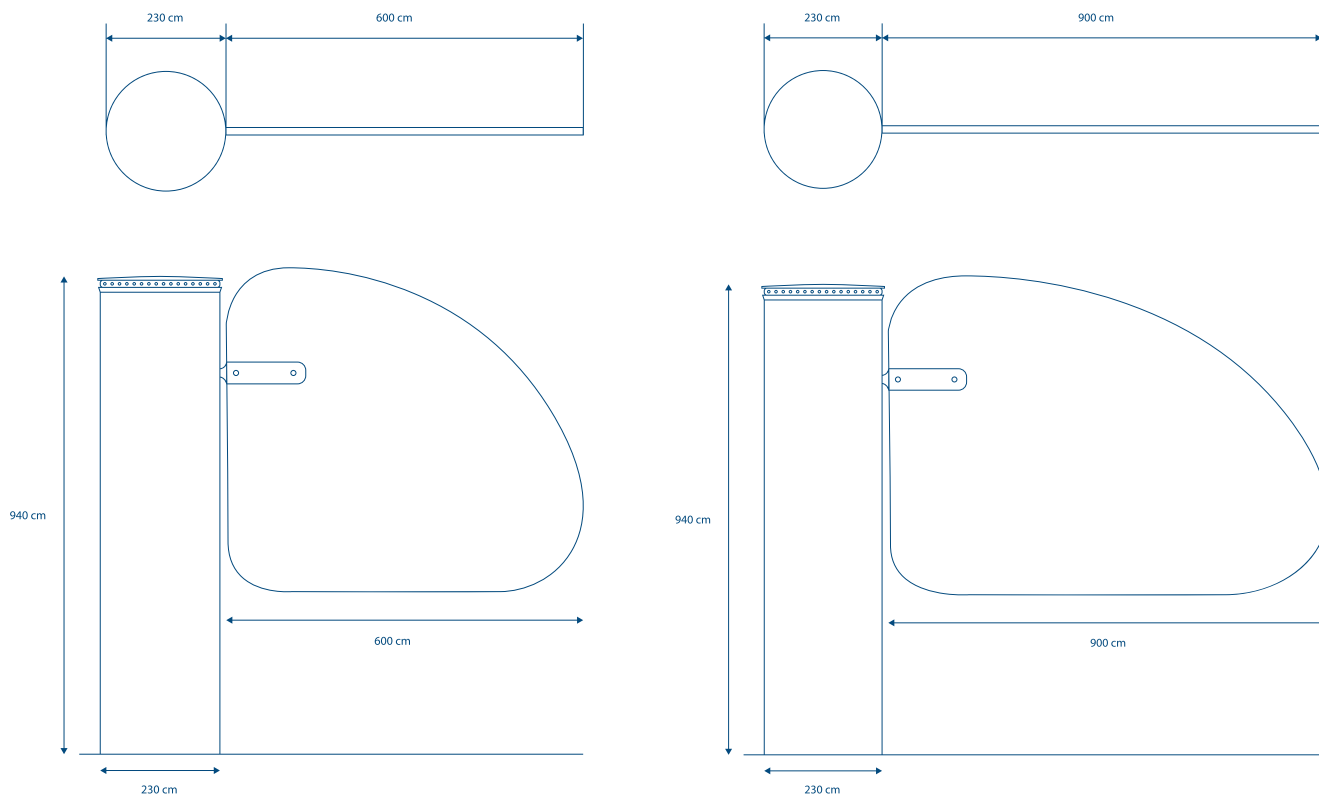
- **AISI 304** stainless steel structure and polycarbonate leaf;
- Integrated luminous crown: indicates suitability for entry and movement of the wing (red: stop - green: okay);
- Integration with access control: people counter system, temperature measurement system, detects mask. The opening of the leaf can also be activated by a card reader, by photocells or other control device;
- The system can be interfaced with other automatic opening systems;
- The leaf can be closed automatically or activated by a device command (also via radio);
- The release maneuver can be carried out using a button or a key;
- Polycarbonate leaf is available in 2 sizes 600mm-900mm;
- The system can work with buffer batteries allowing operation even in the event of a blackout;
- The system is equipped with an amperometric safety device controlled by an encoder: if you accidentally hit the leaf, it stops, goes back and then performs a slow maneuver to check for the absence of obstacles.

EXAMPLES OF APPLICATIONS



STILO AUTOMATIC TURNSTILE

DIMENSIONS



TECHNICAL DATA

Degree of protection	IP44
Supply	120 / 230 V AC
Motor power supply	24 DC
Absorption (standby)	350 mA
Power	120 W
Operating temp. (° C)	-20 ÷ +55
Weight	25 kg
Opening time	2 - 3 sec.

QK-COUNTER

ATTENDANCE CONTROL

The use of the STILO motorized turnstile with the **QK-COUNTER** people counter system allows you to manage the entrance of a limited number of people without the presence of personnel. The luminous crown will act as a traffic light.





X



**ACCESS CONTROL DEVICE WITH FACE
RECOGNITION, TEMPERATURE AND MASK CONTROL
BS-DET2000BT**

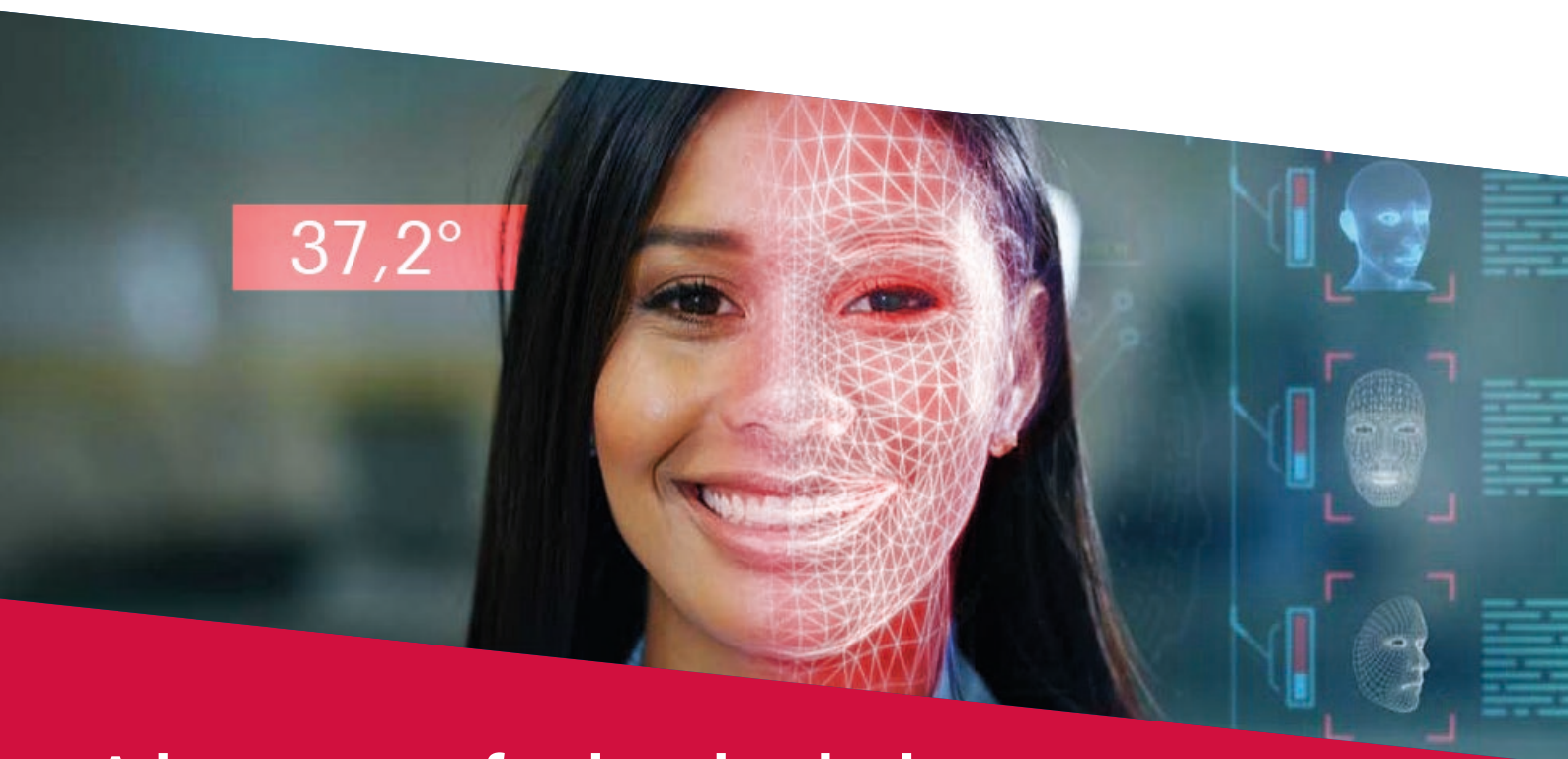
Access control device with face recognition, temperature and mask control

Access control device designed specifically to prevent spread of COVID19 infection. It can detect faces, temperature and control whether visitors are wearing a mask.

Simple and elegant, the device can be installed at entrance of any private or public activity which has the need of controlling accesses to prevent COVID19 infection.

Temperature/Mask detection is easy and reliable. Temperature control acts quickly and with a precision of $\pm 0.3^{\circ}\text{C}$.

By connecting the device to a door automation, the access can be given to those visitors who respect given parameters only.



Advantages of using the device:

Compared to the other available methods, the device is measuring temperature in a more comfortable and easy way, and it does not require the operator to stand next to the visitor.

It can detect when a visitor is not wearing a mask.

If needed it can save the face of all visitors, making access control safer.

A database of 15000 faces can be created, allowing for white list and black list functions.

It saves automatically any anomaly in somebody's temperature.

It can be controlled remotely over the internet with a fixed IP address or cloud P2P.

Easy installation by means of the optional desktop mount bracket or the ground mount post.

Supplied with centralization software for controlling more devices simultaneously.

Basic functions can be controlled via the mobile app.

Video technical details:

Camera resolution: 2 Mega Pixel
Sensor: 1/2.8" SONY IMX327
Minimum light: 0.01 Lux
Lighting: infrared, white light
Shutter: AUTO - 1/50 (1/60) – 1/100000 sec
Other functions: AWB – BLC – WDR – DNR
Image settings: Exposure, gain, contrast, saturation
Video compression: H.264 – H.265
Monitor: 7" IPS HD 1024x600
Day/Night mode: auto adaptive

Temperature control:

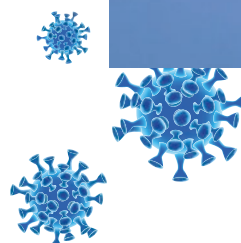
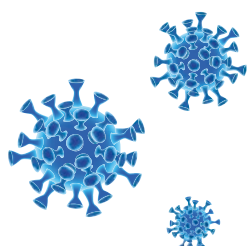
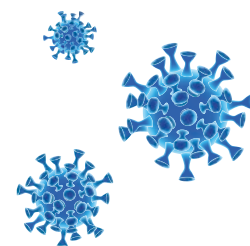
Measuring point: Forehead
Measuring distance: 25-60cm
Precision: $\pm 0.3^{\circ}\text{C}$
Measuring time: ≤ 1 sec
Temperature range: $34-42^{\circ}\text{C}$
Optimal environmental temperature: $15-30^{\circ}\text{C}$

Face and mask recognition:

Working mode: Online, offline, auto
Recognized details: Face, mask
Detection: Biometrical
Precision of face recognition: 99.5%
Recognition distance: 0.3-1.5m
Recognition time: ≤ 1 sec
Database face capacity: 15000 faces
Faces import: Single, bulk, live
Detection area: adjustable,
Image upload: TCP, FTP, HTTP, API commands

Saved images format:

Format: JPEG
Dimension: Partial, half body, full body
Local memory: Up to 100000 events
Additional supported memory: 128Gb TF card



Classification types:

Person type: Blacklist, White list, random

Output: Relay

Event type: Video detection

Alarms:

Alarm type: On display, audio vocal, mobile app

Event type: Anomalous temperature, missing mask, blacklisted face, not recognized

Network:

Supported protocol: IPv4, TCP/IP, NTP, FTP, HTTP

Protocols: OVNVI, RTSP

Security: Access protected by user name and password

Event notification: TF card saving, Upload FTP, alarm output, wiegand output, audio vocal

Firmware: Possibility to Update it remotely

Communication interface:

Network: RJ45 10/100Mbps

I/O Alarms: 2 Inputs, 2 Outputs

Serial connection: RS485

USB: Supported

Technical features:

Protection rate: IP66

Power supply: 12VDC, 12W

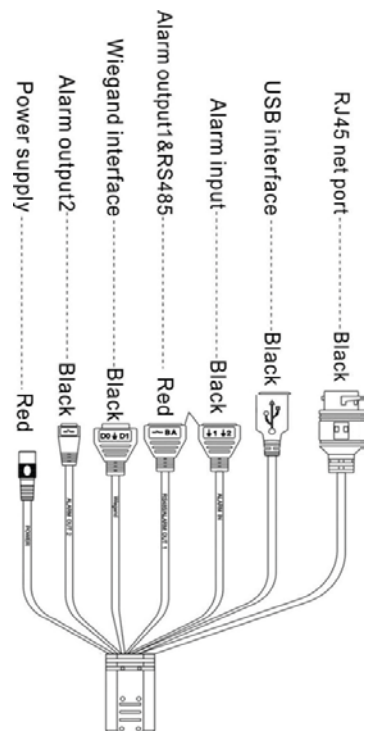
Working temperature -20 / +60°C

Screen size: 269x120x30mm

Optional Accessories:

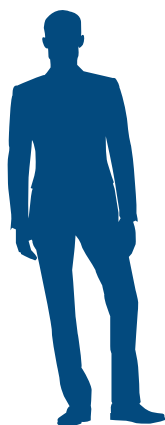
Floor mount post: 110cm (BS-DETPAV110)

Desktop mount base (BS-DETBASE)



EASY WIRING

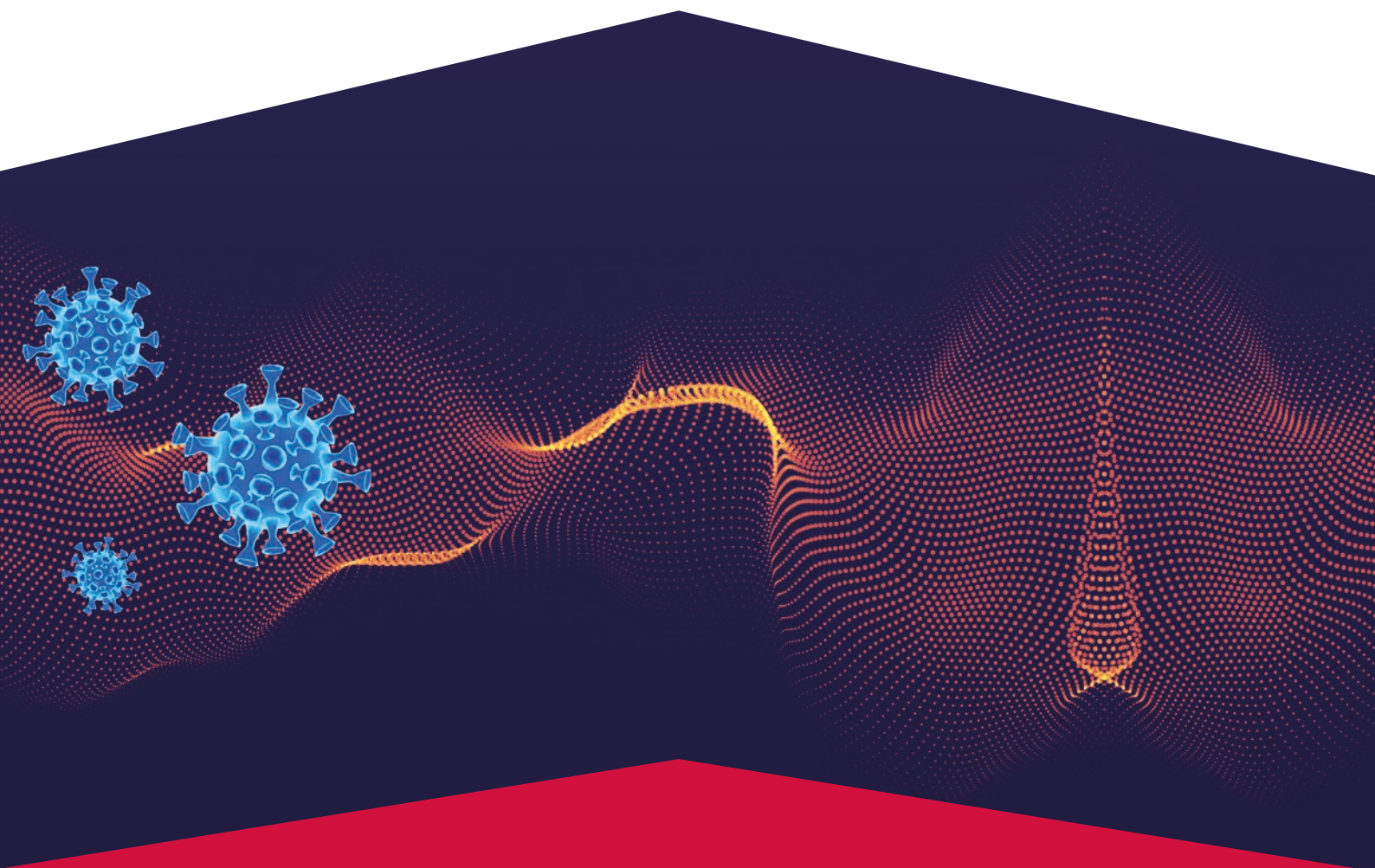




25 - 60cm



TEMPERATURE DETECTION DISTANCE UP TO 60 CENTIMETERS



Quiko Italy

Via Seccalegno, 19
36040 Sossano (VI) - Italy
Tel. +39 0444 785513
Fax +39 0444 782371
info@quikoitaly.com
www.quikoitaly.com

